

Color Temperature:



Total Lumen Output:
3772 lm

Light Quality:

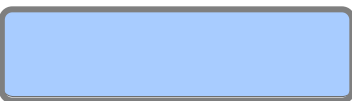


Peak:
28844 cd

Light Efficiency:



Power: 157 W



CIE 1931
x: 0.277
y: 0.265

Test: Full On No UV

Date: 10/9/2018

Voltage: 113 V

Current: 1.39 A

Frequency: 60 Hz

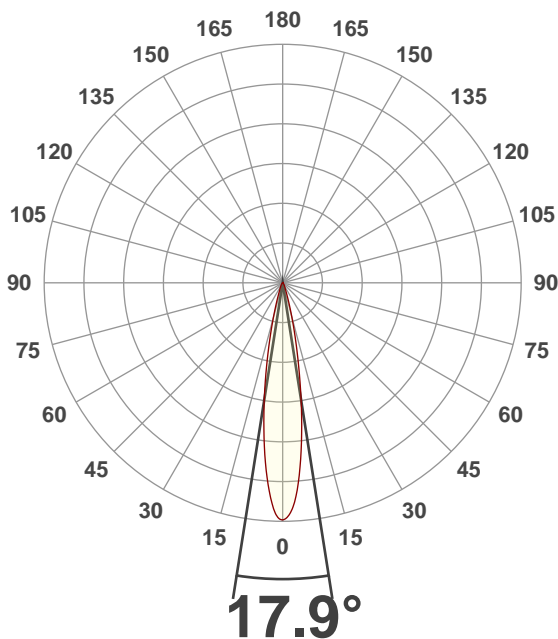
CRI: 81.0

CQS: 87.3

TM30: 79.0

Note:

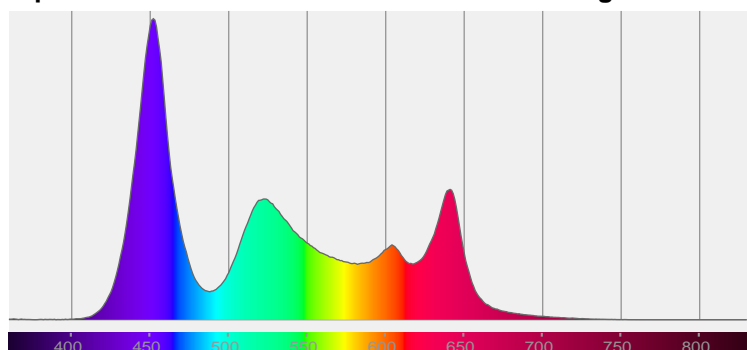
Beam Angle



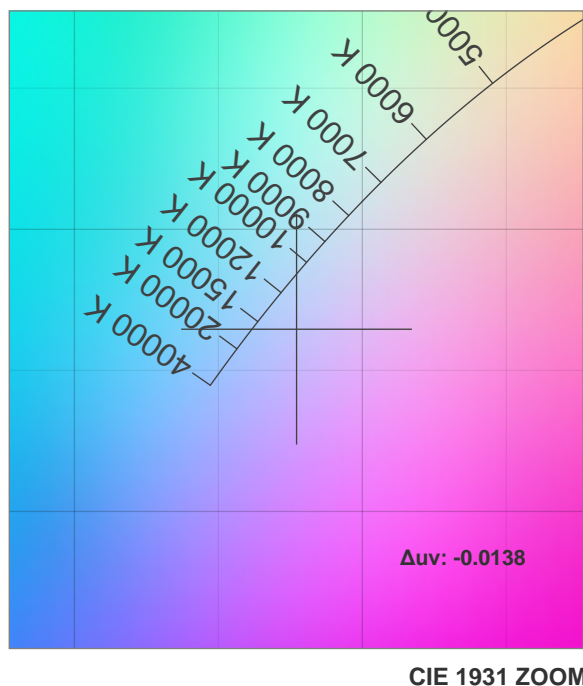
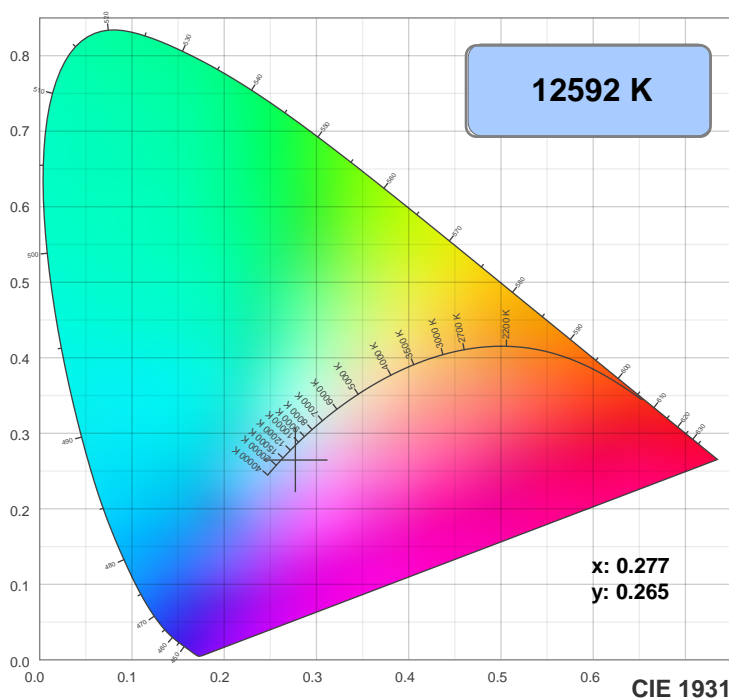
Beam Angle 50%	Field Angle 10%	Cutoff Angle 2.5%
17.9°	33.5°	49°

Spectra

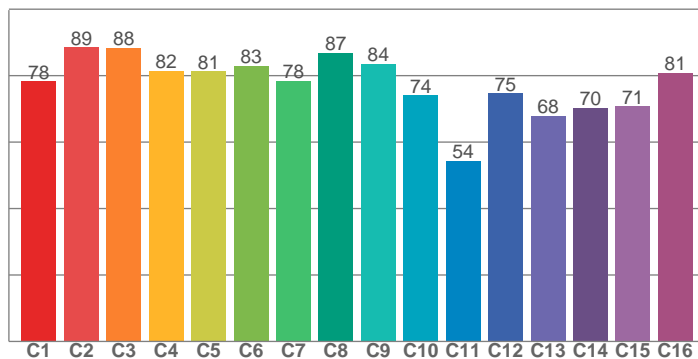
Dominant Wavelength: 458nm



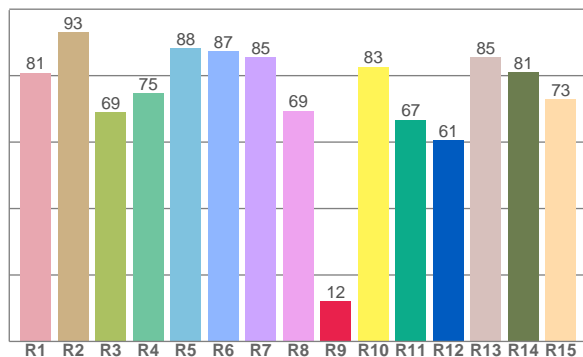
Color Details



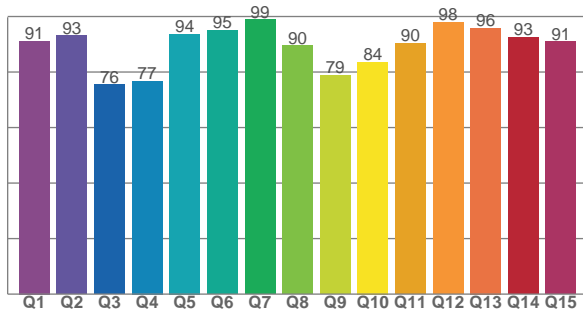
TM30: 79.0



CRI: 81.0 (R1-R8)



CQS: 87.3



CRI R values, only R1-R8 are used to calculate final CRI value

R1	R2	R3	R4	R5	R6	R7	R8	R9	R10	R11	R12	R13	R14	R15
80.9	93.1	69.1	74.7	88.2	87.3	85.5	69.4	12.2	82.7	66.7	60.6	85.5	81.0	72.9

TM30 C Values, 16 binned values out of total of 99 C values

C1	C2	C3	C4	C5	C6	C7	C8	C9	C10	C11	C12	C13	C14	C15	C16
78.3	88.6	88.3	81.5	81.3	82.9	78.4	86.9	83.6	74.1	54.3	74.6	67.9	70.3	70.8	80.8

CQS Q Values

Q1	Q2	Q3	Q4	Q5	Q6	Q7	Q8	Q9	Q10	Q11	Q12	Q13	Q14	Q15
91.1	93.2	75.5	76.8	93.7	95.1	98.9	89.6	78.8	83.6	90.3	97.9	95.8	92.6	90.9

Color Parameters

Color Temperature	Color Rendering Index	Red Component	Color Fidelity	Color Gamut	Color Quality Scale	Color Coordinate CIE 1931	Color Coordinate CIE 1931	Color Coordinate	Color Coordinate	Color Deviation from Black Body
CCT	CRI	CRI R9	TM30 Rf	TM30 Rg	CQS	x	y	u	v	Δuv
12592 K	81.0	12.2	79.0	109.7	87.3	0.277	0.265	0.197	0.282	-0.0138

TM30 Details

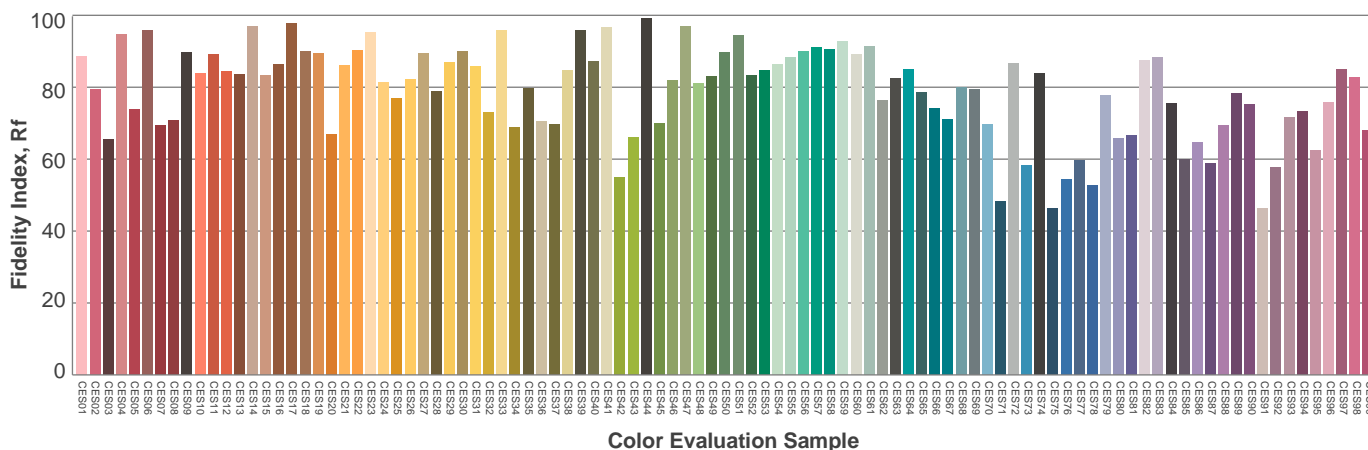
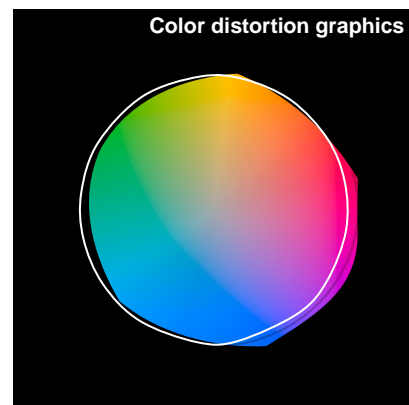
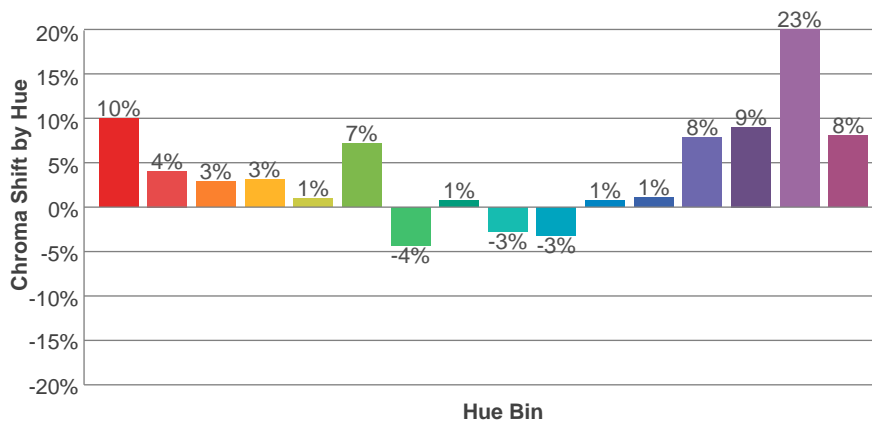
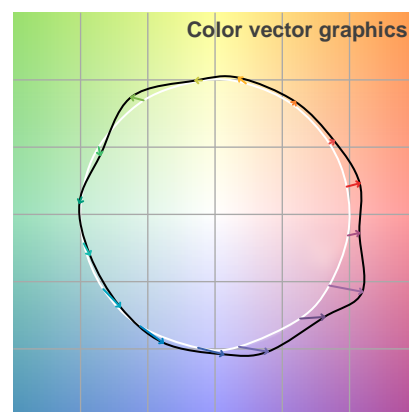
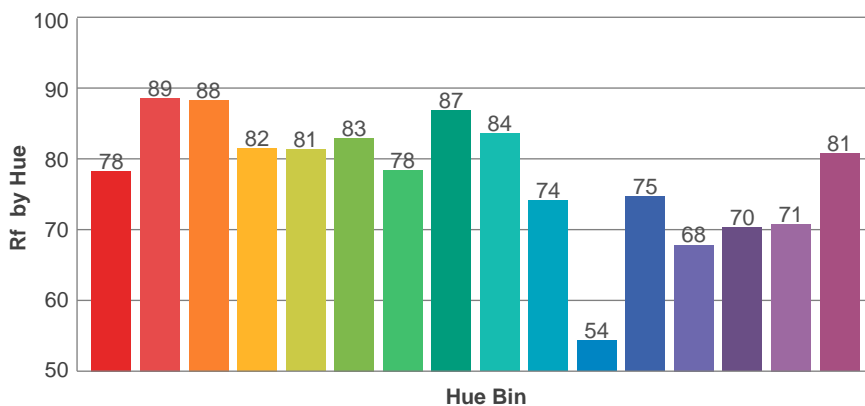
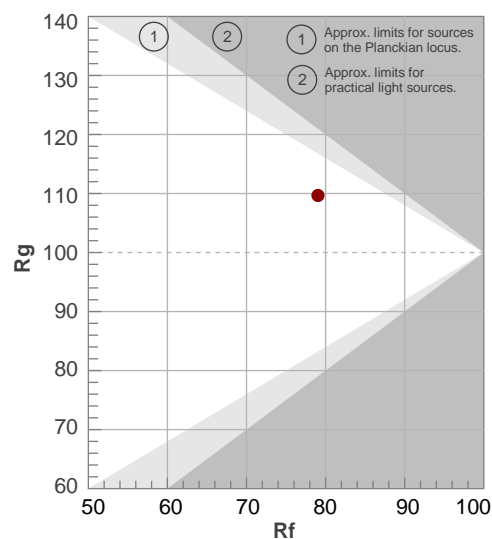
Rf 79.0

Fidelity Index Rf

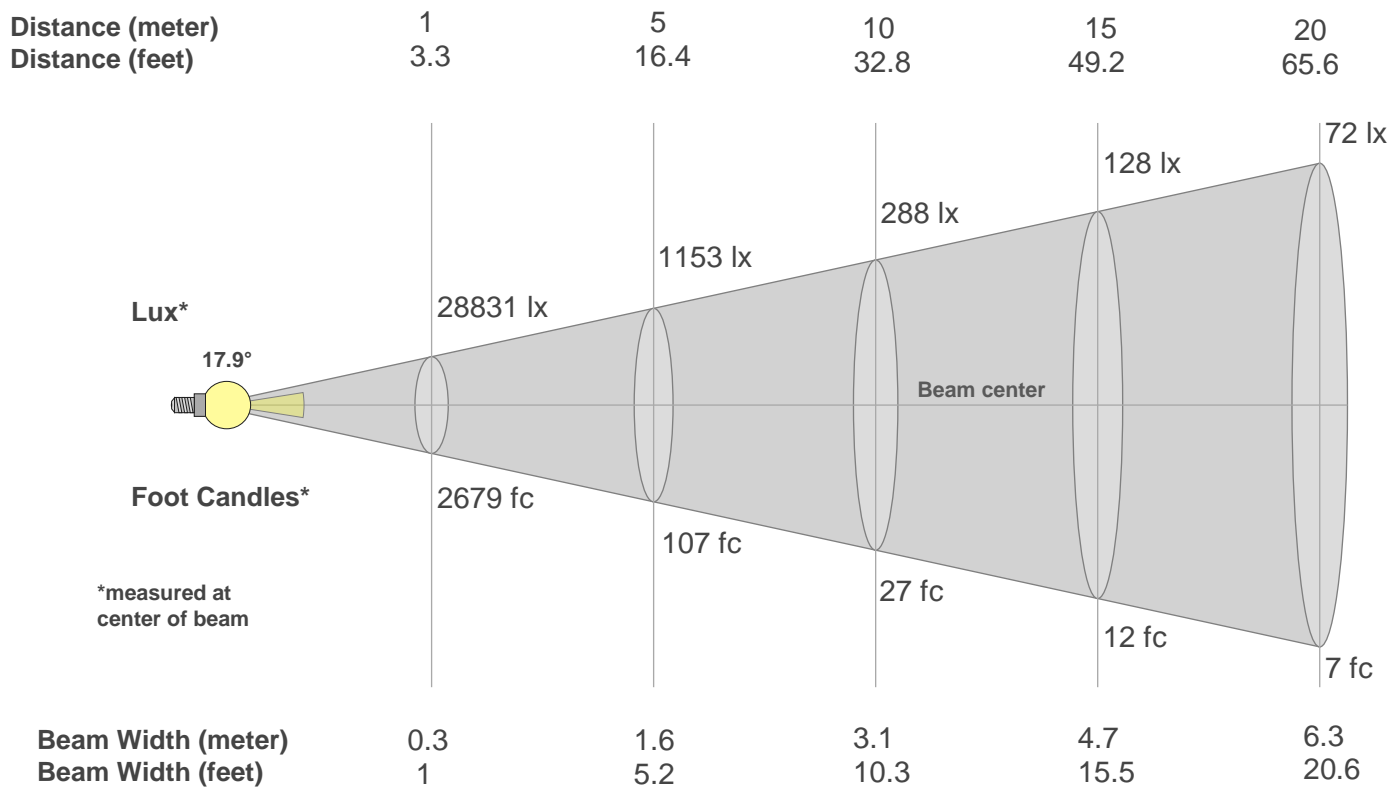
Rg 109.7

Gamut Index Rg

Hue Bin	R _f	Graphic shifts (%)	
		Chroma	Hue
1	78	10%	1%
2	89	4%	0%
3	88	3%	0%
4	82	3%	6%
5	81	1%	5%
6	83	7%	6%
7	78	-4%	4%
8	87	1%	4%
9	84	-3%	9%
10	74	-3%	18%
11	54	1%	21%
12	75	1%	19%
13	68	8%	20%
14	70	9%	16%
15	71	23%	10%
16	81	8%	4%



Beam Details



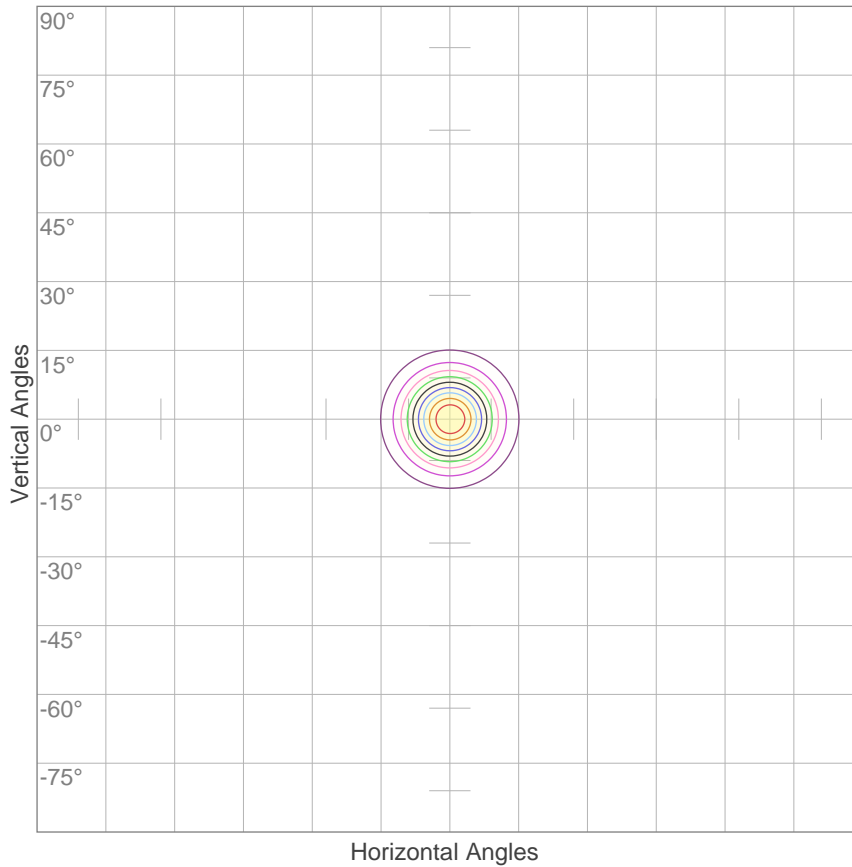
Beam Intensities from 1-20m

m	1	2	3	4	5	6	7	8	9	10	11	12	13	14	15	16	17	18	19	20
ft	3.3	6.6	9.8	13.1	16.4	19.7	23	26.2	29.5	32.8	36.1	39.4	42.7	45.9	49.2	52.5	55.8	59.1	62.3	65.6
lx	28831	7208	3203	1802	1153	801	588	450	356	288	238	200	171	147	128	113	100	89	80	72
fc	2678.5	669.6	297.6	167.4	107.1	74.4	54.7	41.9	33.1	26.8	22.1	18.6	15.8	13.7	11.9	10.5	9.3	8.3	7.4	6.7

Beam Angle 50%	Field Angle 10%	Cutoff Angle 2,5%	Intensity Ratio in 120° Cone	Intensity Ratio in 90° Cone
17.9°	33.5°	49°	99.9%	98.6%

ISO Diagrams

ISO Candela Diagram



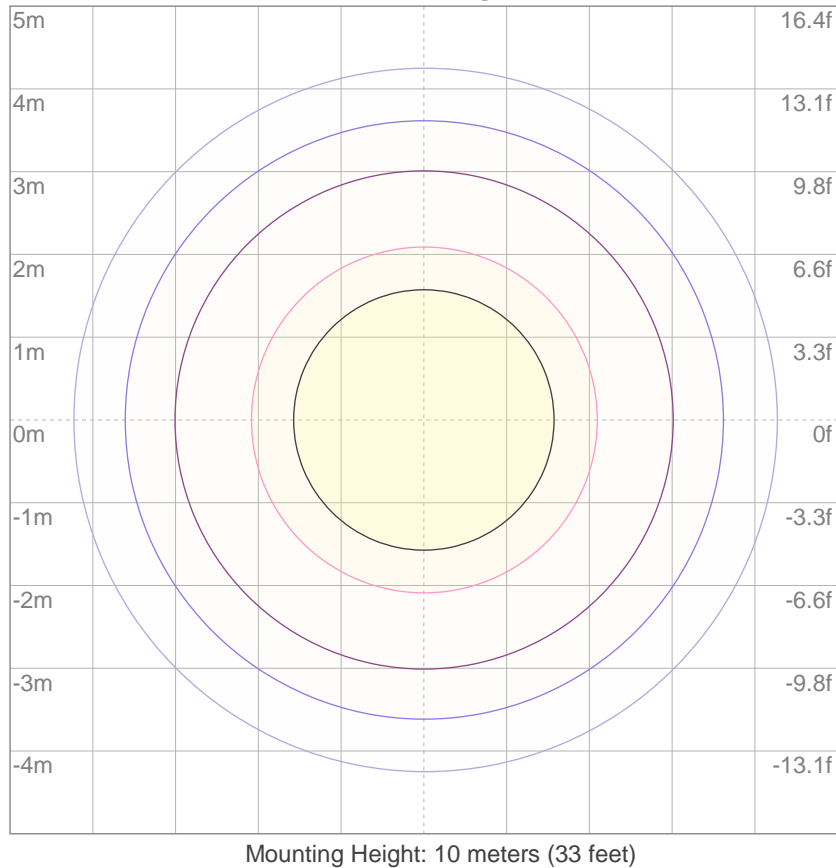
10%	2883 cd
20%	5766 cd
30%	8649 cd
40%	11533 cd
50%	14416 cd
60%	17299 cd
70%	20182 cd
80%	23065 cd
90%	25948 cd

Conditions:

Number of c-planes: 2

Candela at center: 28831 cd

ISO Lux Diagram



3%	8.65 lx
5%	14.4 lx
10%	28.8 lx
30%	86.5 lx
50%	144 lx

Conditions:

Number of c-planes: 2

Lux at center: 288 lx

Lux distribution on a surface when lamp is mounted at 10 meters from the surface.