

Color Temperature:



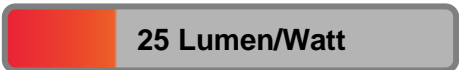
Total Lumen Output:
19314 lm

Light Quality:

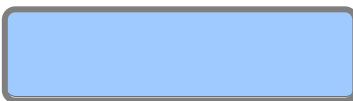


Peak:
92467 cd

Light Efficiency:



Power: 772 W



CIE 1931
x: 0.273
y: 0.263

Test: Full On No UV

Date: 10/17/2018

Voltage: 116 V

Current: 6.66 A

Frequency: 60 Hz

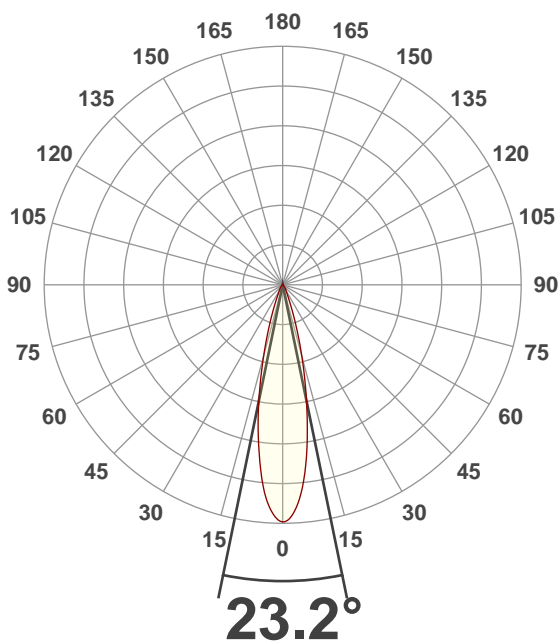
CRI: 82.6

CQS: 87.7

TM30: 79.8

Note:

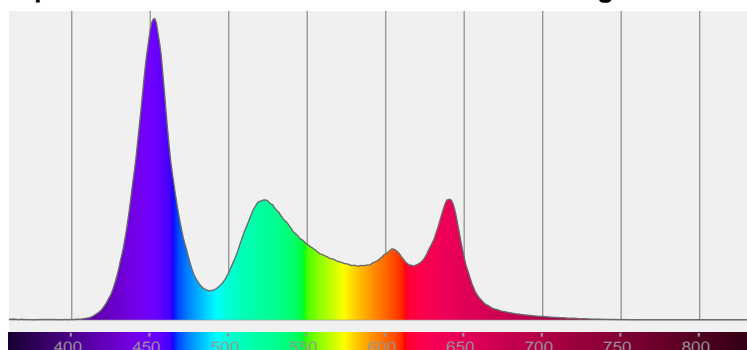
Beam Angle



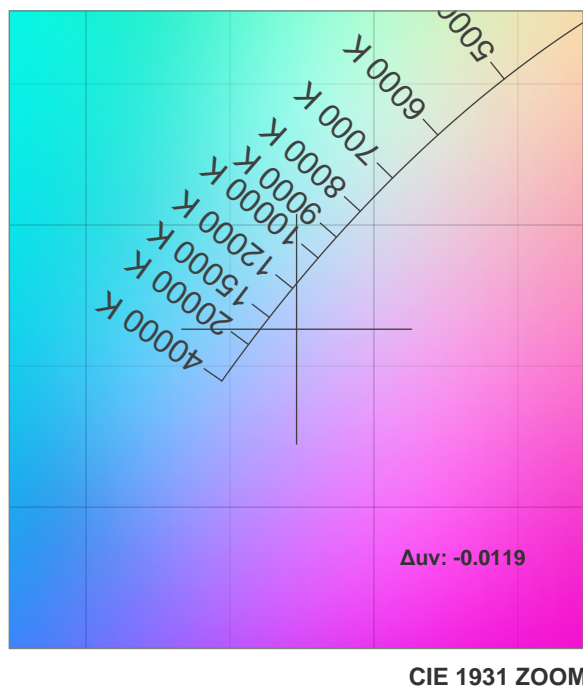
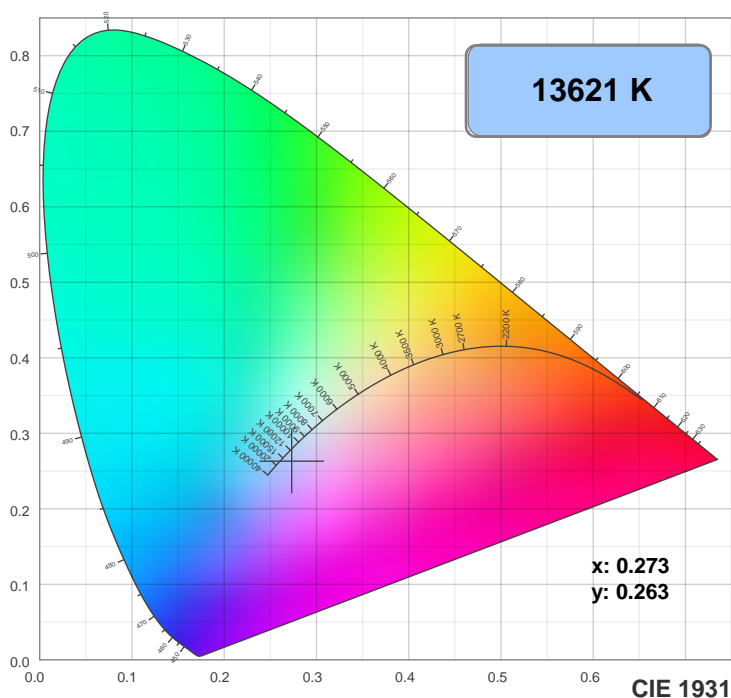
Beam Angle 50%	Field Angle 10%	Cutoff Angle 2.5%
23.2°	42.3°	62.8°

Spectra

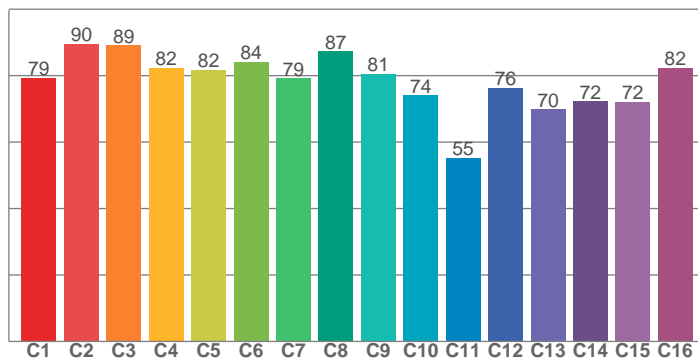
Dominant Wavelength: 464nm



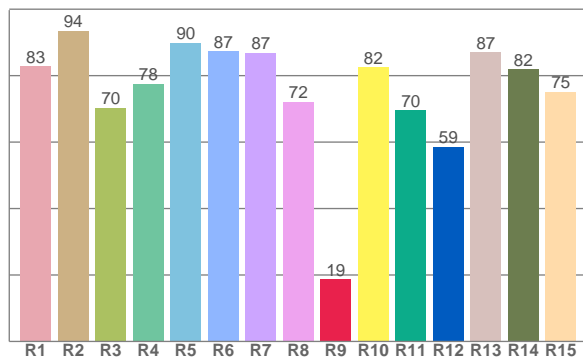
Color Details



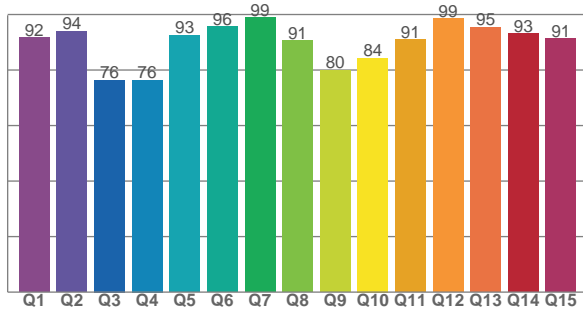
TM30: 79.8



CRI: 82.6 (R1-R8)



CQS: 87.7



CRI R values, only R1-R8 are used to calculate final CRI value

R1	R2	R3	R4	R5	R6	R7	R8	R9	R10	R11	R12	R13	R14	R15
82.8	93.5	70.3	77.5	89.9	87.3	86.9	72.2	18.7	82.4	69.5	58.7	87.1	81.9	75.1

TM30 C Values, 16 binned values out of total of 99 C values

C1	C2	C3	C4	C5	C6	C7	C8	C9	C10	C11	C12	C13	C14	C15	C16
79.3	89.6	89.1	82.4	81.7	84.2	79.2	87.3	80.5	74.1	55.2	76.3	69.9	72.3	72.1	82.3

CQS Q Values

Q1	Q2	Q3	Q4	Q5	Q6	Q7	Q8	Q9	Q10	Q11	Q12	Q13	Q14	Q15
91.7	94.0	76.4	76.4	92.5	95.7	98.8	90.6	79.9	84.4	90.9	98.5	95.4	93.1	91.2

Color Parameters

Color Temperature	Color Rendering Index	Red Component	Color Fidelity	Color Gamut	Color Quality Scale	Color Coordinate CIE 1931	Color Coordinate CIE 1931	Color Coordinate	Color Coordinate	Color Deviation from Black Body
CCT	CRI	CRI R9	TM30 Rf	TM30 Rg	CQS	x	y	u	v	Δuv
13621 K	82.6	18.7	79.8	108.4	87.7	0.273	0.263	0.195	0.281	-0.0119

TM30 Details

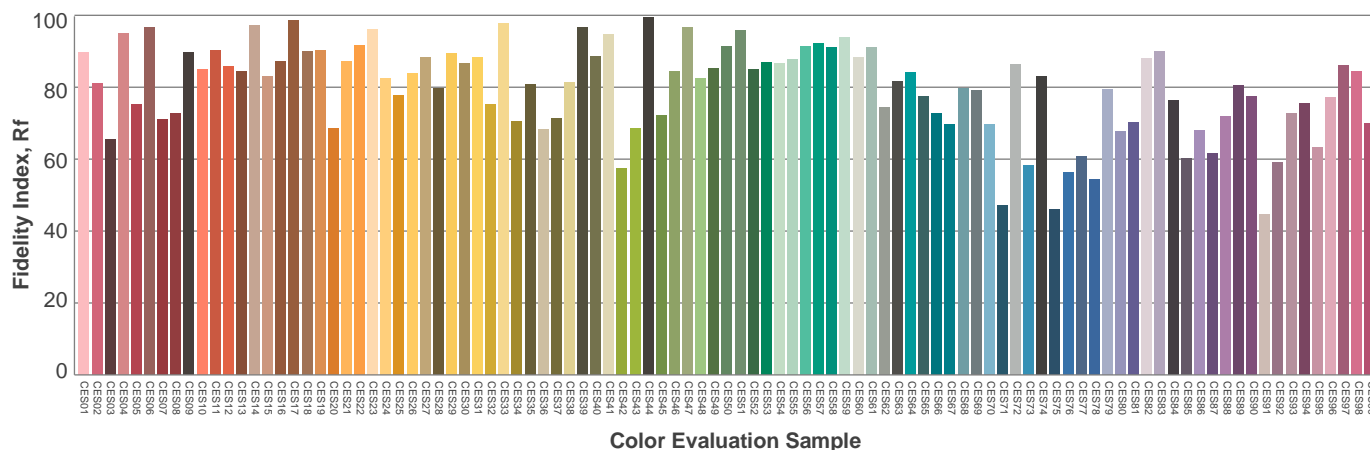
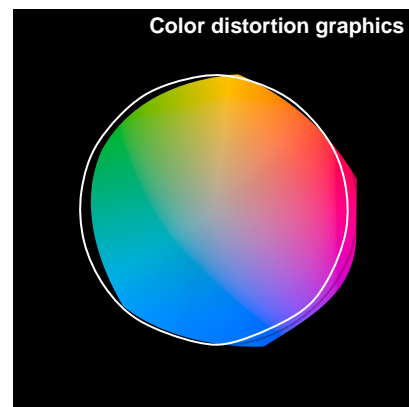
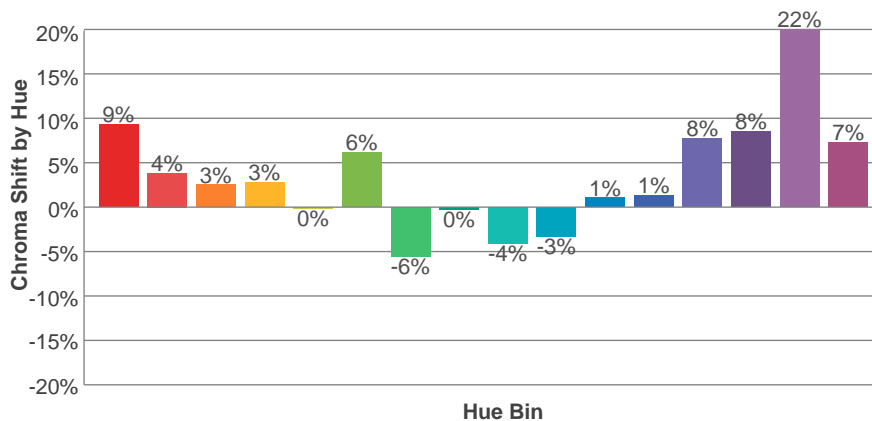
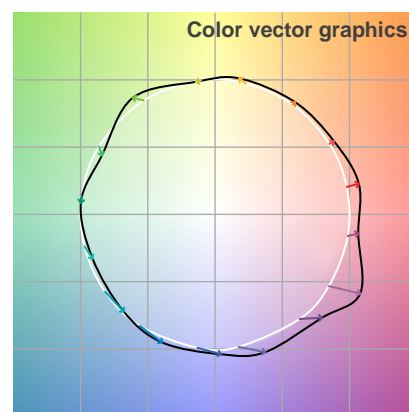
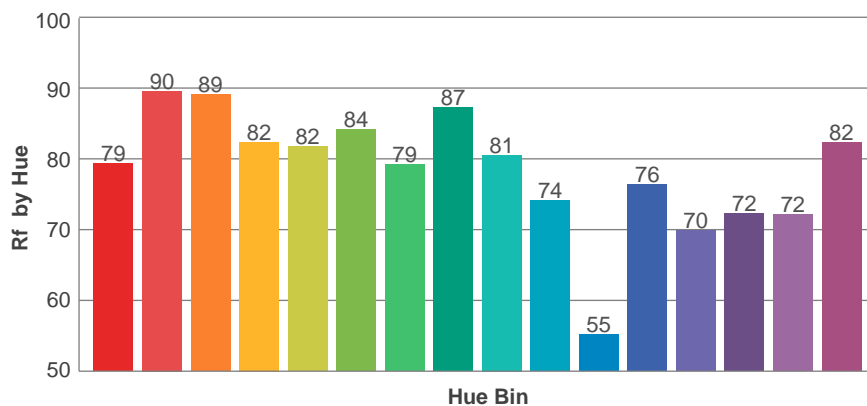
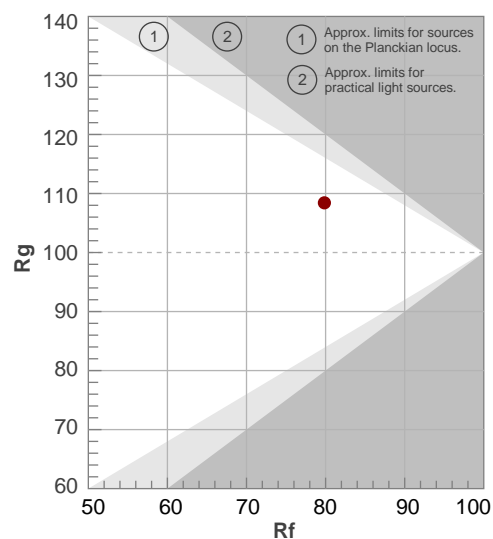
Rf 79.8

Fidelity Index Rf

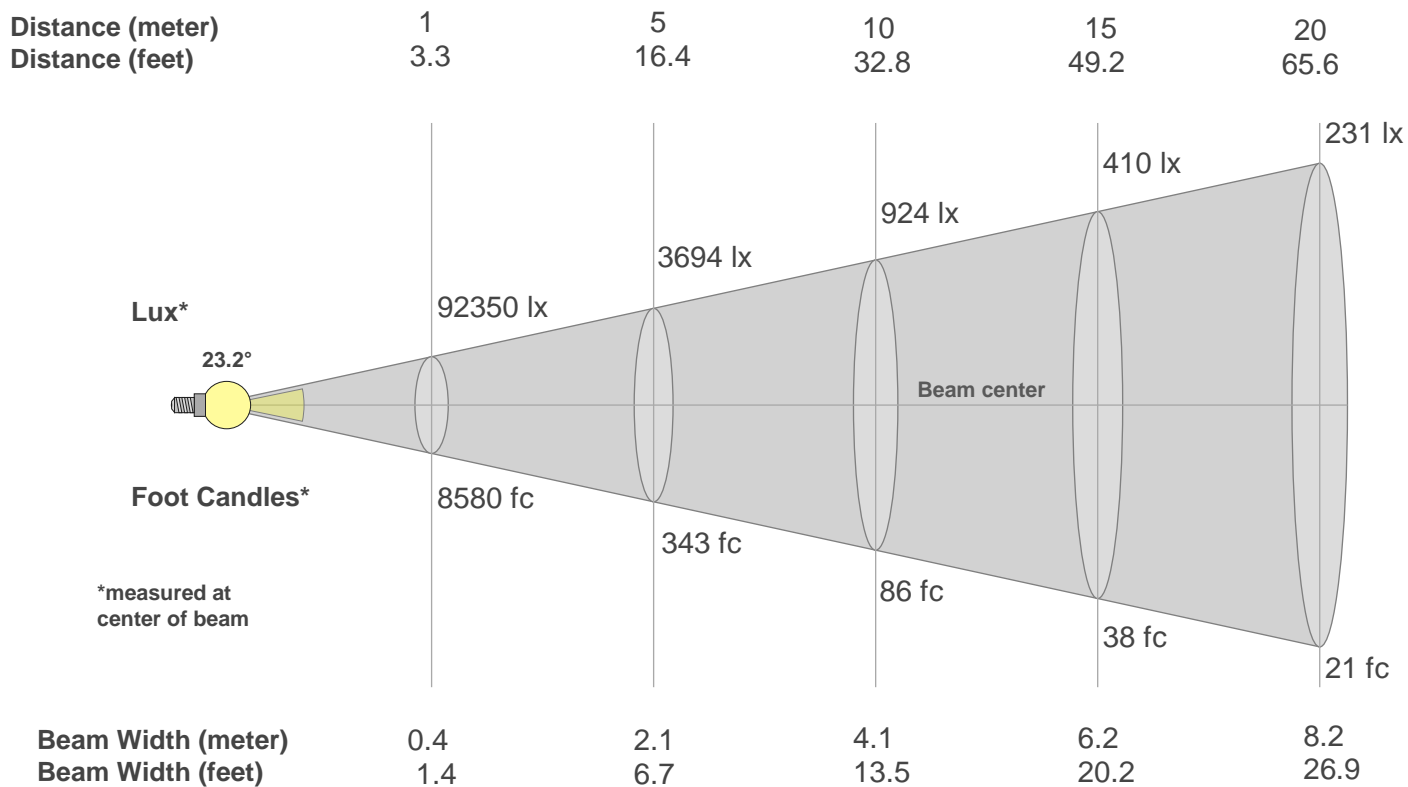
Rg 108.4

Gamut Index Rg

Hue Bin	R _f	Graphic shifts (%)	
		Chroma	Hue
1	79	9%	1%
2	90	4%	0%
3	89	3%	-1%
4	82	3%	5%
5	82	0%	4%
6	84	6%	6%
7	79	-6%	4%
8	87	0%	5%
9	81	-4%	10%
10	74	-3%	20%
11	55	1%	21%
12	76	1%	18%
13	70	8%	19%
14	72	8%	14%
15	72	22%	8%
16	82	7%	3%



Beam Details



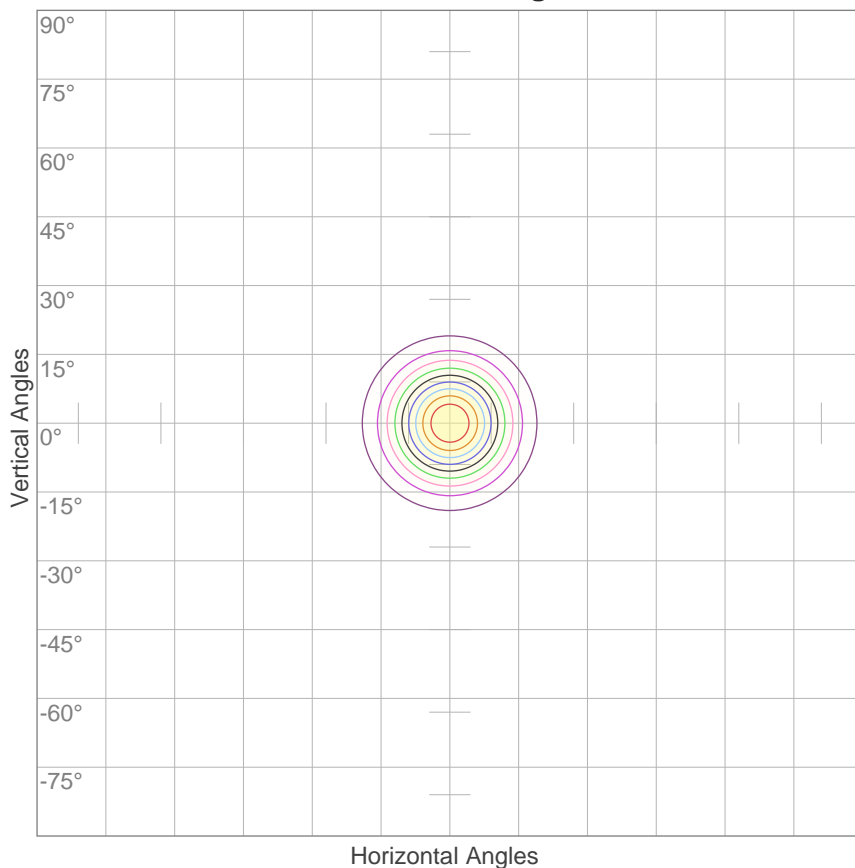
Beam Intensities from 1-20m

m	1	2	3	4	5	6	7	8	9	10	11	12	13	14	15	16	17	18	19	20
ft	3.3	6.6	9.8	13.1	16.4	19.7	23	26.2	29.5	32.8	36.1	39.4	42.7	45.9	49.2	52.5	55.8	59.1	62.3	65.6
lx	92350	23088	10261	5772	3694	2565	1885	1443	1140	924	763	641	546	471	410	361	320	285	256	231
fc	8579.6	2144.9	953.3	536.2	343.2	238.3	175.1	134.1	105.9	85.8	70.9	59.6	50.8	43.8	38.1	33.5	29.7	26.5	23.8	21.4

Beam Angle 50%	Field Angle 10%	Cutoff Angle 2,5%	Intensity Ratio in 120° Cone	Intensity Ratio in 90° Cone
23.2°	42.3°	62.8°	99.7%	97.1%

ISO Diagrams

ISO Candela Diagram



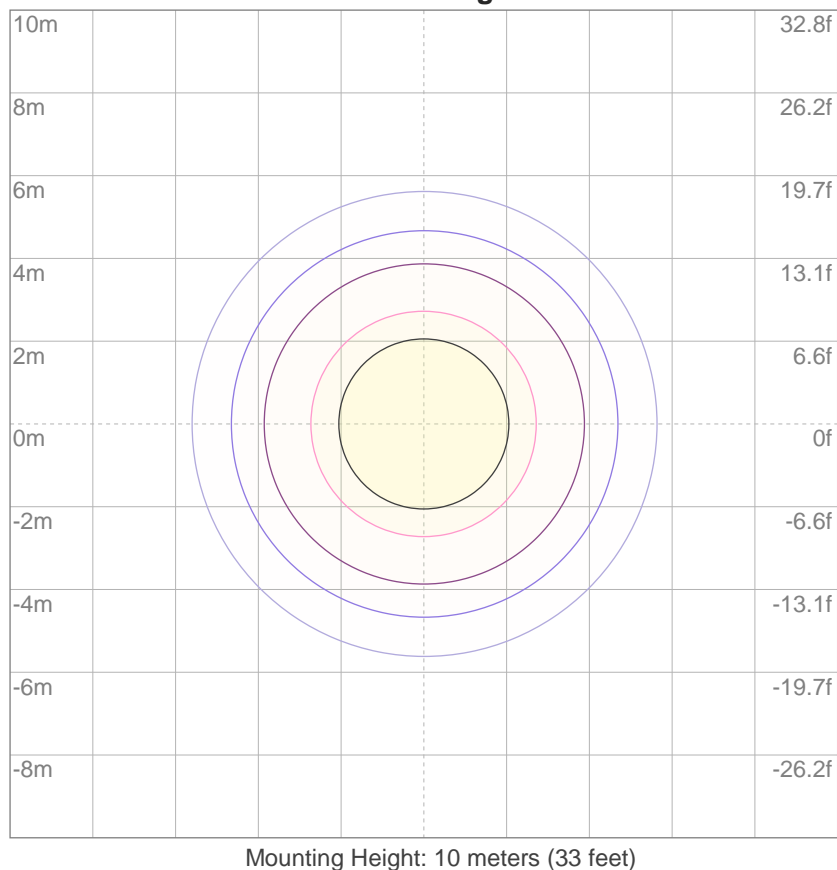
10%	9235 cd
20%	18470 cd
30%	27705 cd
40%	36940 cd
50%	46175 cd
60%	55410 cd
70%	64645 cd
80%	73880 cd
90%	83115 cd

Conditions:

Number of c-planes: 2

Candela at center: 92350 cd

ISO Lux Diagram



3%	27.7 lx
5%	46.2 lx
10%	92.4 lx
30%	277 lx
50%	462 lx

Conditions:

Number of c-planes: 2

Lux at center: 924 lx

*Lux distribution on a surface
when lamp is mounted at 10
meters from the surface.*